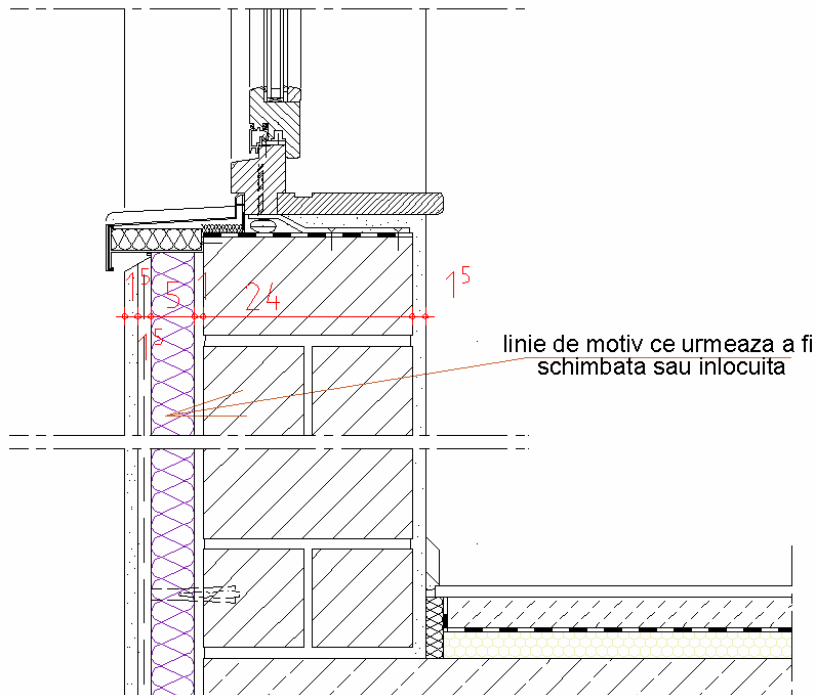

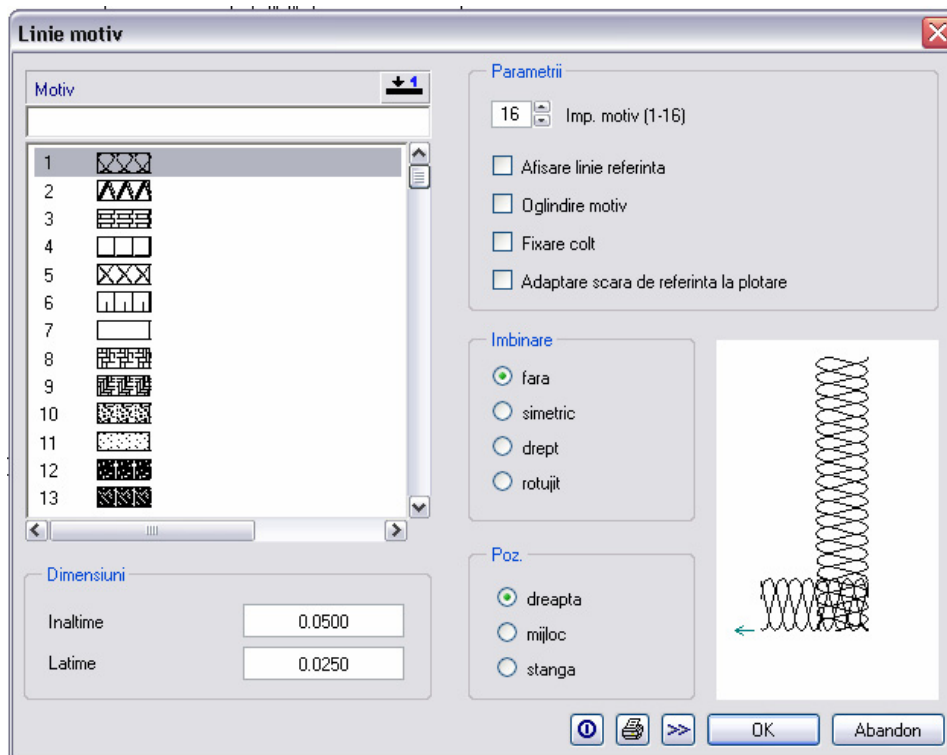


Modificarea definitiilor liniei de motiv

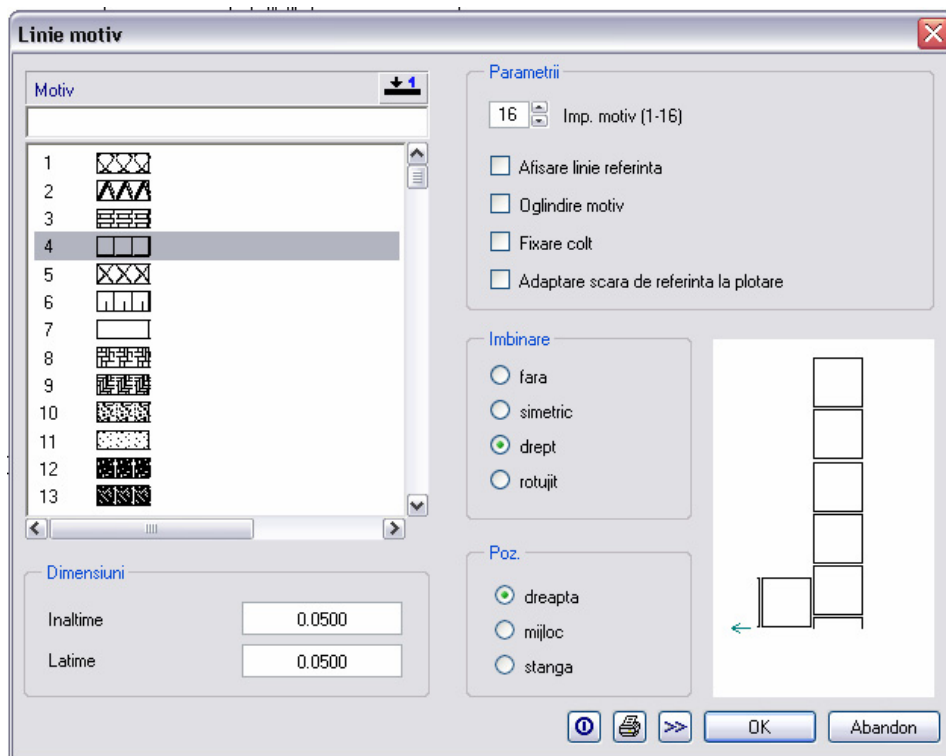
Daca doriti sa modificati parametrii liniei de motiv sau sa o inlocuiti cu linie continua procedati in felul urmatoar:



1. Faceti clic pe  **Modificare linie de motiv** din bara de instrumente **Modificare (Modul Constructii 2D)** si indicati linia ce urmeaza a fi modificata.
Se va deschide urmatoarea fereastra de dialog cu setarile initiale ale liniei de motiv.



2. Schimbati intai reprezentarea motivului, a tipului de imbinare si a dimensiunii.
In exemplul nostru setarile noi sunt:



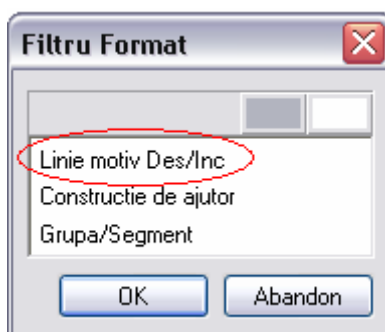
3. Confirmati setarile cu **Ok**, modificarea va aparea automat imediat dupa inchiderea ferestrei de dialog.

Daca desenul este foarte incarcat si nu puteti selecta linia de motiv, programul va ofera

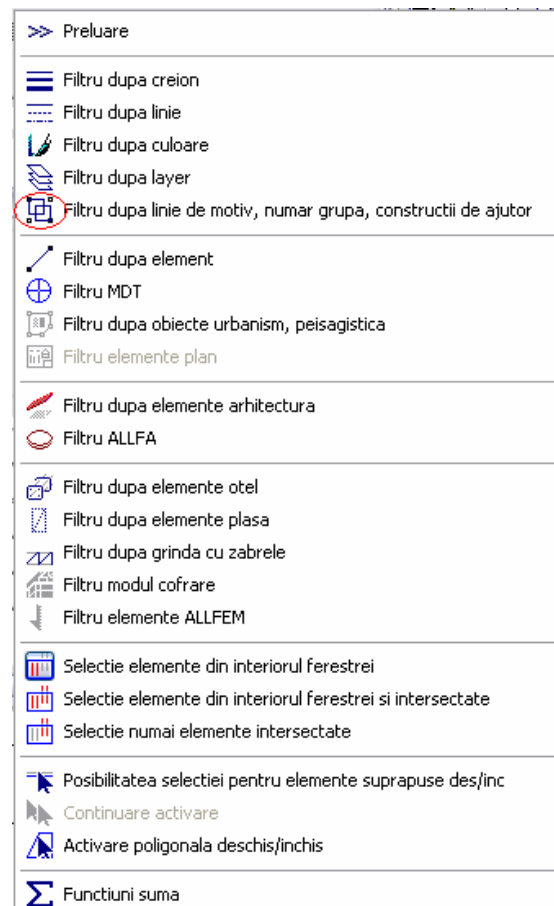
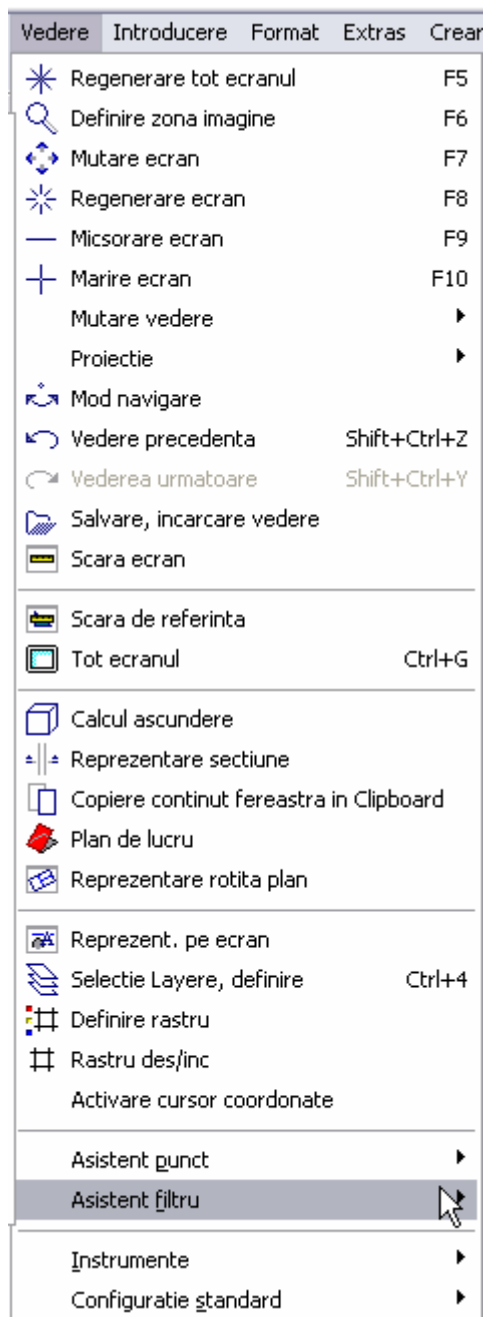



functia
Linie motiv.

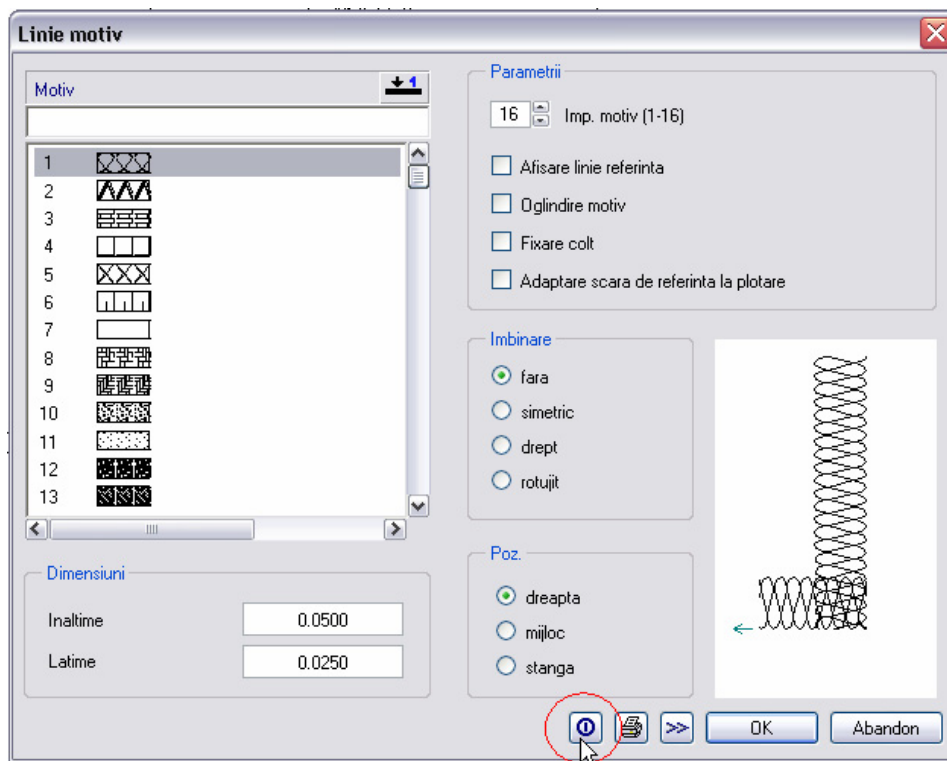
Filtru (bara de instrumente Asistent filtru) de unde selectati



Daca in barele de instrumente afisate pe ecran nu este activata aceasta functie o puteti regasi in: Vedere / Asistent filtru .



In cazul in care doriti inlocuirea liniei de motiv cu linie continua, dupa ce faceti clic pe  Modificare linie de motiv, in fereastra de selectie faceti clic pe Inchis.



Linia de motiv se va modifica dupa confirmarea cu **Ok**.